

<b>COORDINACIÓN DE PRODUCCIÓN</b>	Elaborado por: CSGC
	Revisado por: JFA
	Aprobado por: GE
<b>FICHA TÉCNICA BUJE DE PARQUEO</b>	Página 1 de 2



### GENERAL

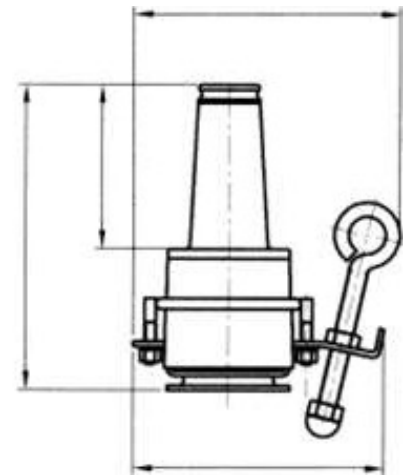
The CEE DBG-15/200 insulated standoff bushing provides a single load break interface. It is used to isolate and sectionalize energized cable in pad-mounted Transformers, switchgear and other apparatus. Temporary or permanent parking of energized 200<sup>a</sup> load break elbow connectors is simplified with use of the insulated standoff bushing. It protects the deenergized elbow connectors from dust, water and damp. When mated with a comparably rated product, the insulated standoff bushing provides a fully shielded, submersible, and separable connector for energized operation.

It is molded of high quality insulating EPDM rubber and installed in the parking stand mounted on a transformer or other apparatus. A grounding lug is provided on the standoff bushing bracket for attachment of a ground wire to ensure dead front construction.

### ELECTRICAL CHARACTERISTICS

Voltage ratings and characteristics	
Description	kV
Standard voltaje class	15
Maximum rating pase-to-phase	14.4
Maximum rating pase-to-ground	8.3
AC 50 HZ 1 minute withstand	39
DC 15 minute withstand	53
BIL and full wave crest	95
11 kV pantial discharge (not more than)	3PC
Electrical characteristics are in accordance with or exceed GB/T 12706.4-2002. ANSI/EEE 386-1995, IEC 60502-4:1997	

### DIMENSIONS (mm)



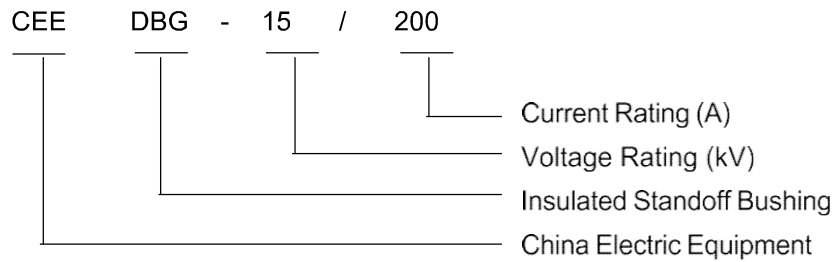
### STANDARD PACKING LIST

1	Insulated standoff bushing
2	Red shipping cap
3	Silicone lubricant
4	Cleaning paper
5	Installation instruction sheet
6	Quality certificate

## ORDERING INFORMATION

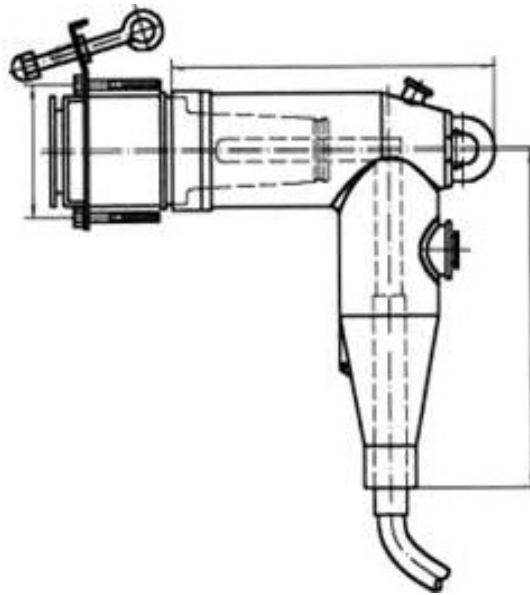
Catalog No.	Voltage rating (kV)	Current rating (A)
CEE DBG – 15/200	15	200

## CODE INFORMATION



## TYPICAL ARRANGEMENT

Insulated standoff bushing + 200A loadbreak elbow connector (15kV class)



**SPECIAL OPERATING TOOL:** Clampsticks