

COORDINACIÓN DE PRODUCCIÓN	Elaborado por: CSGC
	Revisado por: JFA
	Aprobado por: GE
FICHA TÉCNICA AISLADOR INSERTO DOBLE 200A - 15kV	Página 1 de 2



GENERAL

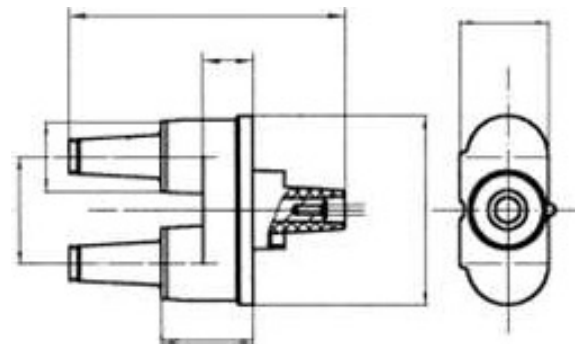
The CEE STT – 15/200 rotatable feedthru insert is used to provide dual brushing from a single apparatus bushing well. When adding in-line arrester protection to the high-voltage circuit in the pad mounted transformers, the rotatable feedthru insert must be used. It also makes converting radial-feed transformers to feedthru transformers both easy and practical.

The rotatable feedthru inserts are molded using high quality peroxide-cured EPDM insulation. When mated with comparably rated products, the inserts provide a fully shielded and submersible connection for load break operation. Its built-in torque-limiting ratchet prevents operators from accidentally breaking bushing well studs during installation.

ELECTRICAL CHARACTERISTICS

Voltage rating and characteristics	
Description	kV
Standard coltage class	15
Maximum rating phase-to-phse	14.4
Maximum rating phase-to-ground	8.3
AC 50Hz Minute Withstand	34
DC 15 Minute Withstand	53
BIL and full wave crest	95
11kV partial discharge (not more tan)	3pC
Current ratings and characteristics	
Description	Amperes
Continuous	200A
Switching	10 operations at 200 ^a , 14.4kV
Fault closure	10kA
Short time	10kA rmsgsymmetrical for 0.2s 3.5kA rms symmetrical for 3.0s
Electrical characteristics are in accordance with or exceed GB/T 12706.4-2002. ANSI/IEEE 386-1995, IEC 60502-4:1997.	

DIMENSIONS (MM)



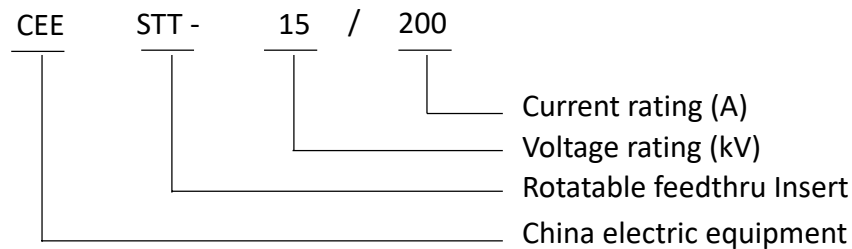
STANDARD PACKING LIST

1	Rotatable feedthru insert
2	Red shipping cap
3	Cooper grounding wire
4	Stainless Steel bail assembly
5	Silicone lubricant
6	Cleaning paper
7	Installation instruction sheet
8	Quality certificate

ORDERING INFORMATION

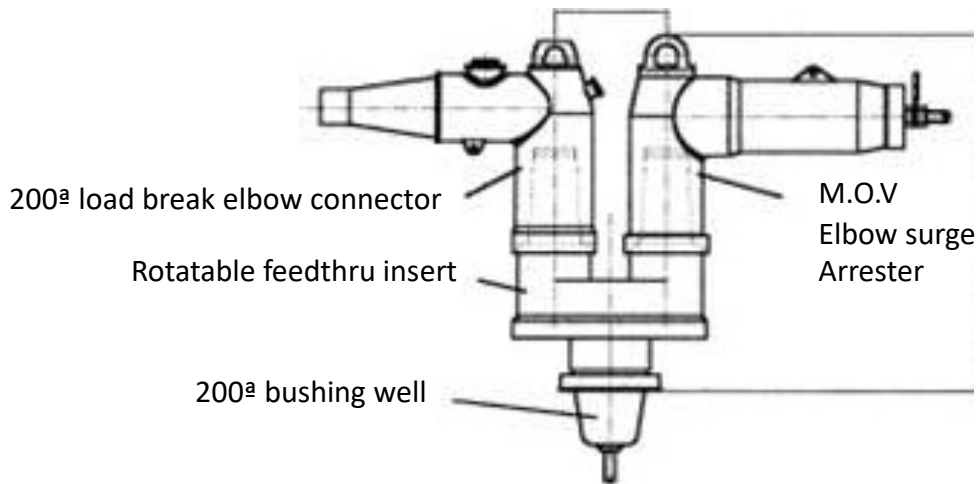
Catalog #	Voltage rating (kV)	Current rating (A)
CEE STT – 15/200	15	200

CODE INFORMATION



TYPICAL ARRANGEMENT

200^a Bushing well + 200^a rotatable feedthru insert + 200^a loadbreak
Elbow connector + M.O.V elbow surge arrester (15kV class)



IMPORTANT

All of the 200^a spare interface must be covered with 200^a insulated protective cap. Red shipping cap is not for energized operation. Do not replace the insulated protective cap with red shipping cap.